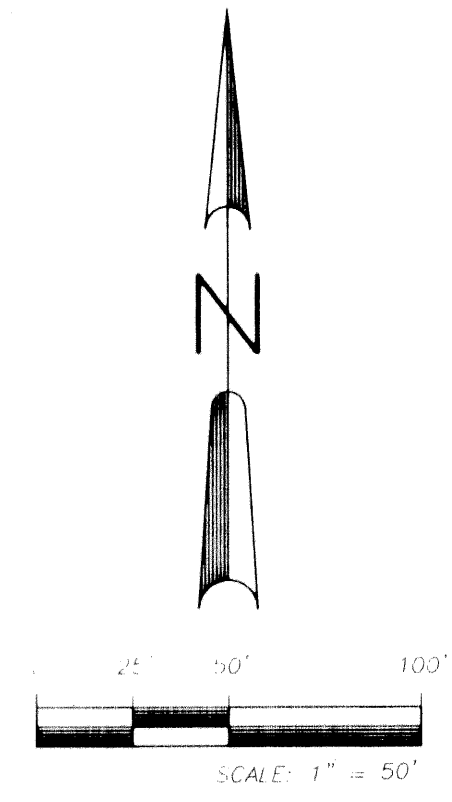


VINTAGE OAKS ESTATES – REPLAT NO. 1

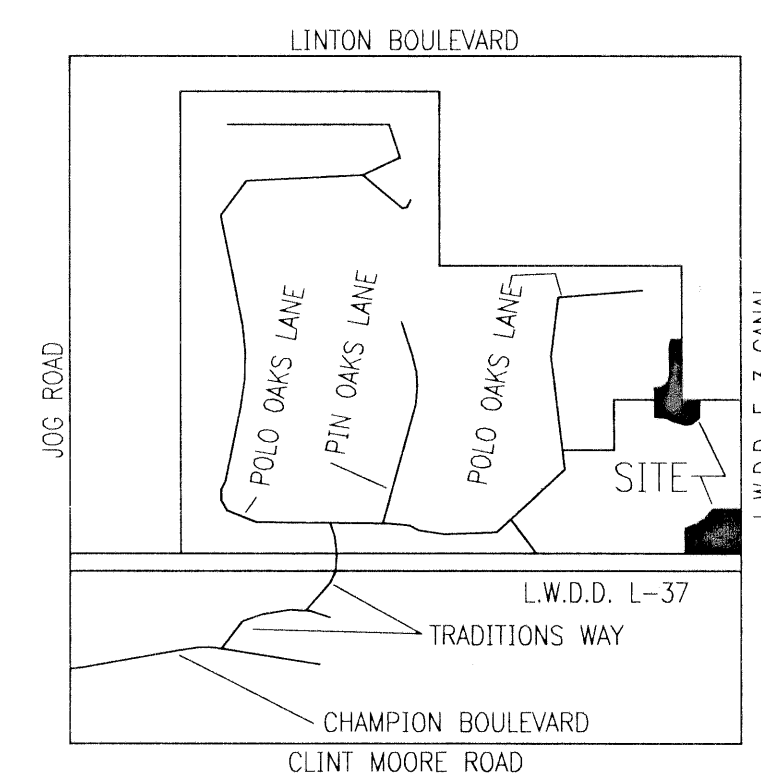
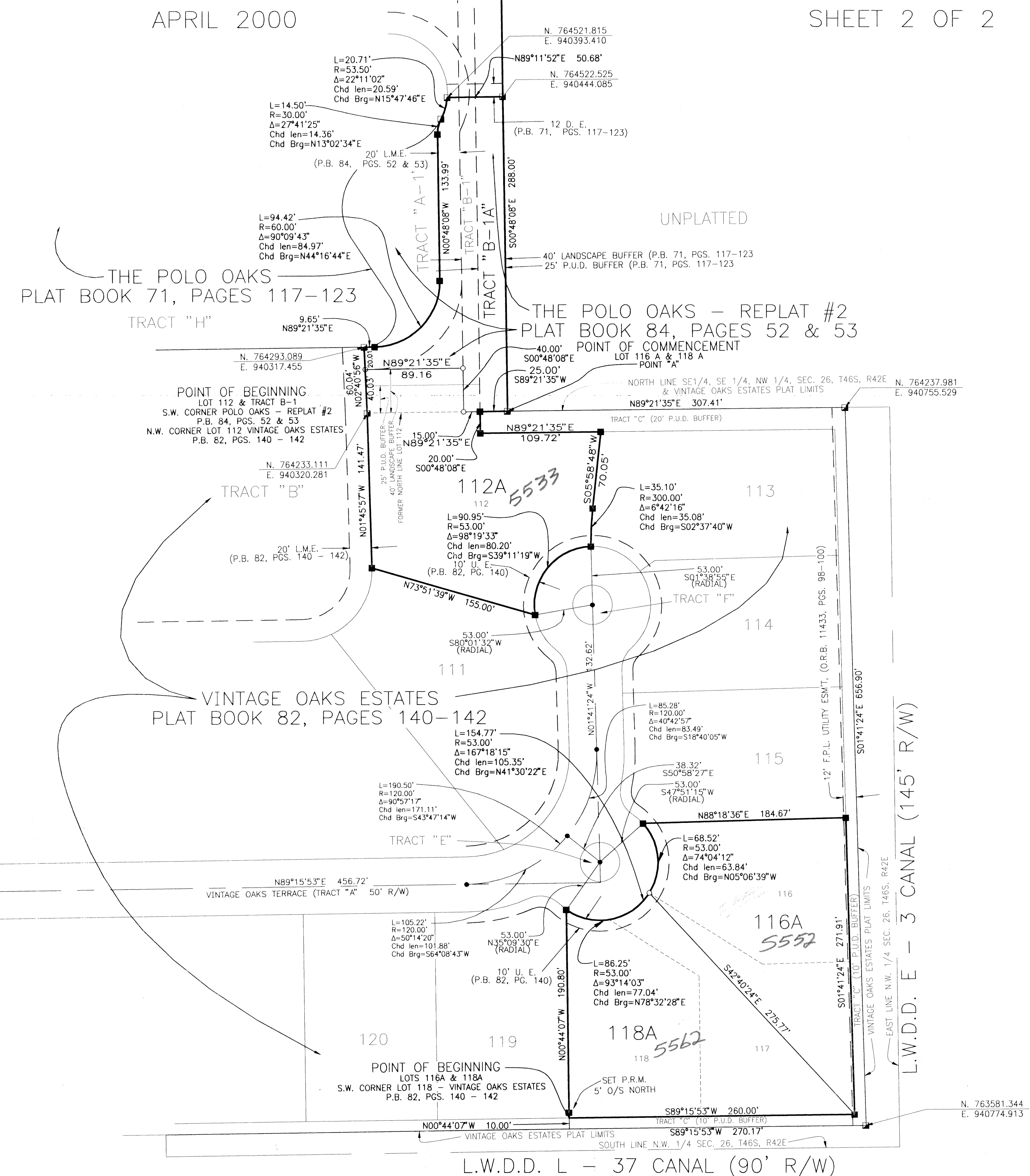
BEING A REPLAT OF A PORTION OF VINTAGE OAKS ESTATES
PART OF THE POLO CLUB P.U.D., (P.B. 82, PGS. 140 – 142) AND
A REPLAT OF A PORTION OF POLO OAKS – REPLAT # 2
PART OF THE POLO CLUB P.U.D., (P.B. 84, PGS. 52 AND 53)
LYING IN SECTION 26, TOWNSHIP 46 SOUTH, RANGE 42 EAST
PALM BEACH COUNTY, FLORIDA.

APRIL 2000

SHEET 2 OF 2



STATE OF FLORIDA
COUNTY OF PALM BEACH
This plat was filed for
record at _____, this _____
day of _____, 2000,
and duly recorded in
Plat Book No. _____ on
Pages _____ through _____
DOROTHY H. WILKIN
Clerk Circuit Court
By: _____



ABBREVIATION LEGEND

- | | |
|----------|------------------------------|
| Chd Brng | CHORD BEARING |
| Chd Len | CHORD LENGTH |
| C/CALC | CALCULATED DIMENSION |
| D.E. | DRAINAGE EASEMENT |
| DISC | BRASS DISC |
| FD/FND | FOUND |
| L.B. | LICENSED BUSINESS |
| L.M.E. | LAKE MAINTENANCE EASEMENT |
| L.S. | LAND SURVEYOR |
| N.R. | NON-RADIAL |
| O.R.B. | OFFICIAL RECORD BOOK |
| P/PLAT | PREVIOUSLY PLATTED |
| P.B. | PLAT BOOK |
| P.C.P. | PERMANENT CONTROL POINT |
| P.L.S. | PROFESSIONAL LAND SURVEYOR |
| P.O.B. | POINT OF BEGINNING |
| P.O.C. | POINT OF COMMENCEMENT |
| P.R.M. | PERMANENT REFERENCE MONUMENT |
| PC | POINT OF CURVATURE |
| PK | PK BRAND NAIL |
| PT | POINT OF TANGENCY |
| REC | RECORD DATA |
| R/W | RIGHT-OF-WAY |
| REF. | REFERENCE |
| R/RGE. | RANGE |
| SEC. | SECTION |
| T/TWP. | TOWNSHIP |
| TYP. | TYPICAL |
| U.E. | UTILITY EASEMENT |
| N # | STATE PLANE NORTHING |
| E # | STATE PLANE EASTING |
-
- DENOTES PERMANENT CONTROL POINT FOUND (P.C.P.) PK NAIL W/DISC, NO NUMBER OR 3/4" PIPE & CAP "PETSCH" UNLESS OTHERWISE NOTED
 - DENOTES PERMANENT REFERENCE MONUMENT FOUND P.L.S. 4392 UNLESS OTHERWISE NOTED
 - DENOTES PERMANENT REFERENCE MONUMENT SET P.L.S. 4512 – L.B. 4574 UNLESS OTHERWISE NOTED
 - DENOTES SET 3/4" PIPE & CAP "PETSCH & ASSOC., INC."

VINTAGE OAKS ESTATES
PAGE 45
PLAT # 88
L.S. # 35
ZIP CODE 33484
TAX # 477
FID NAME

PETSCH & ASSOCIATES, INC.
Professional Engineers – Land Surveyors – Development Consultants – Testing Services
2581 Metrocentre Boulevard, Suite 6, West Palm Beach, Florida 33407 (561) 640-3800
6900 Virginia Parkway, Suite 214, McKinney, Texas 75070 (972) 562-9606

REPLAT OF VINTAGE OAKS ESTATES – LOTS 112, 116, 117 & 118
& REPLAT OF POLO OAKS – REPLAT #2 – TRACT B-1
SECTION 26, TOWNSHIP 46S., RANGE 42E.
PALM BEACH COUNTY, FLORIDA

Drawn by:	Date:	SCALE:	JOB NUMBER:	SHEET
P.M.V.	APRIL 2000	1" = 60'	93-061-1P.DWG	2 OF 2
Designed by:	Checked by:			
P.M.V.	P.M.V.			